

CRYSTALLED® SERIES PARKING AREAS

Parking area suggestion 1

Illuminance

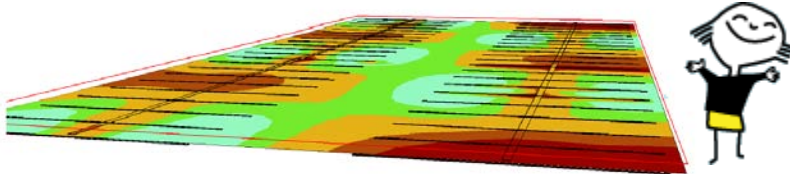
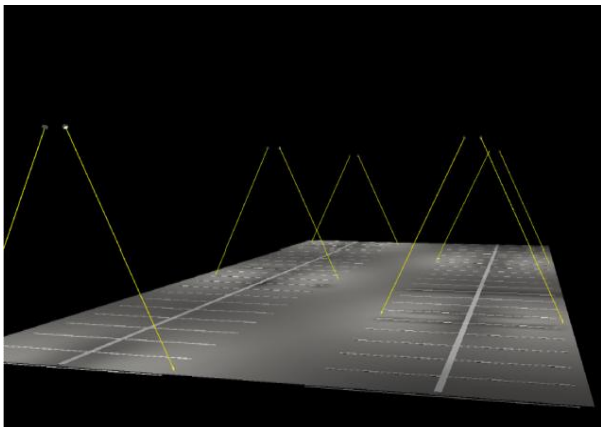
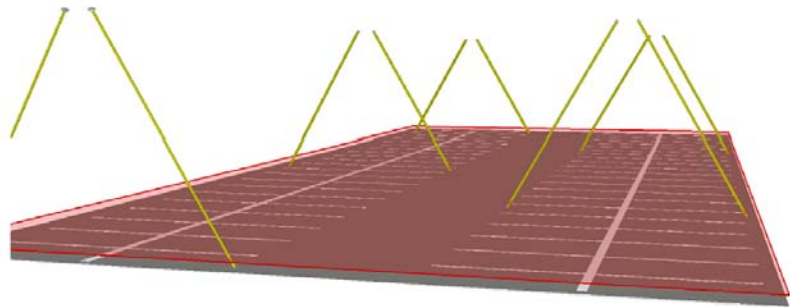
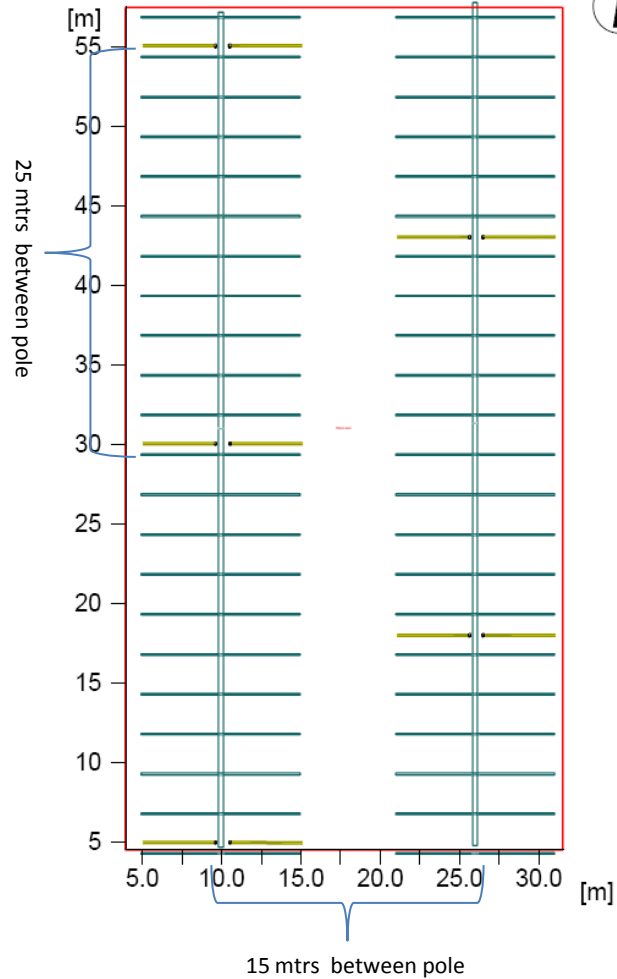
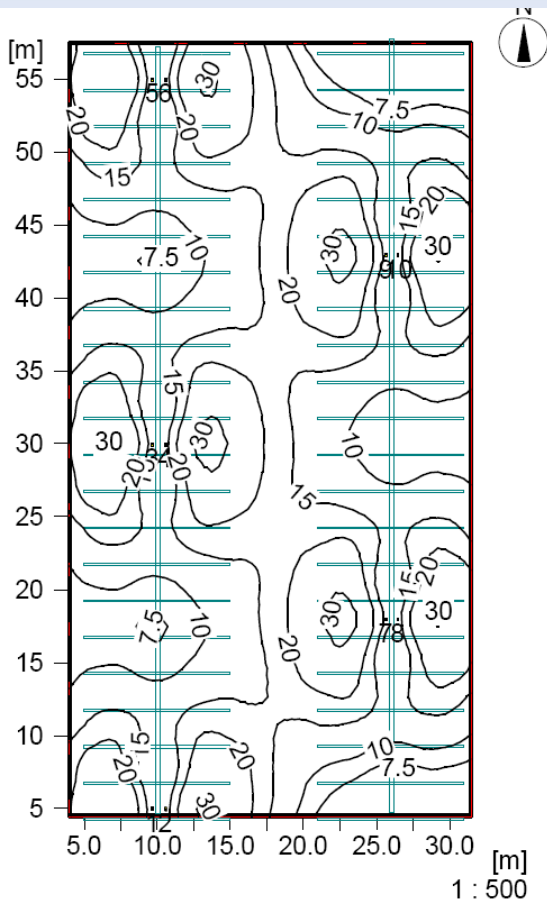
Average illuminance Eav 15.8 lx

Maximum illuminance Emax 32.3 lx

Lamp: LLG CrystalLed 24 6000K XPG 3711lm 36W

2 lamps@ 8mtr pole.

Total power per area (1457.50 m²) 0.27 W/m² (1.74 W/m²/100lx)



LedlightGroup



www.ledlightgroup.com

CRYSTALLED® SERIES PARKING AREAS

Parking area suggestion 2

Illuminance

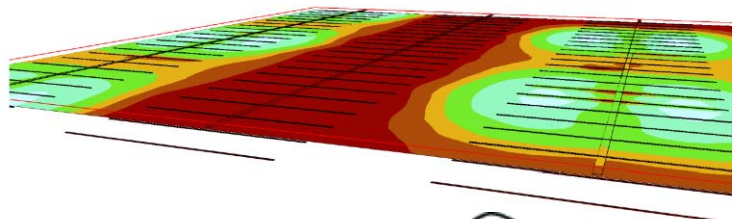
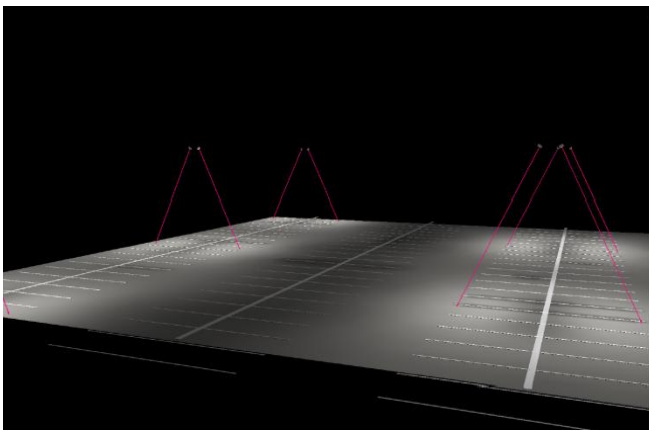
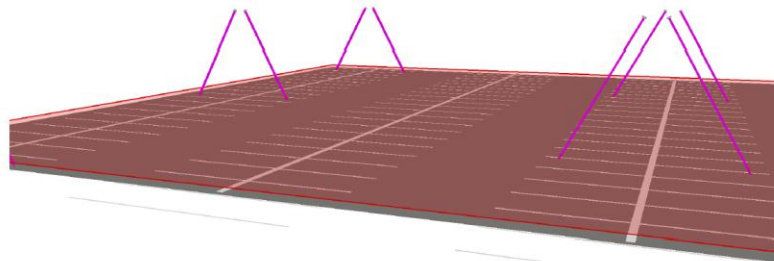
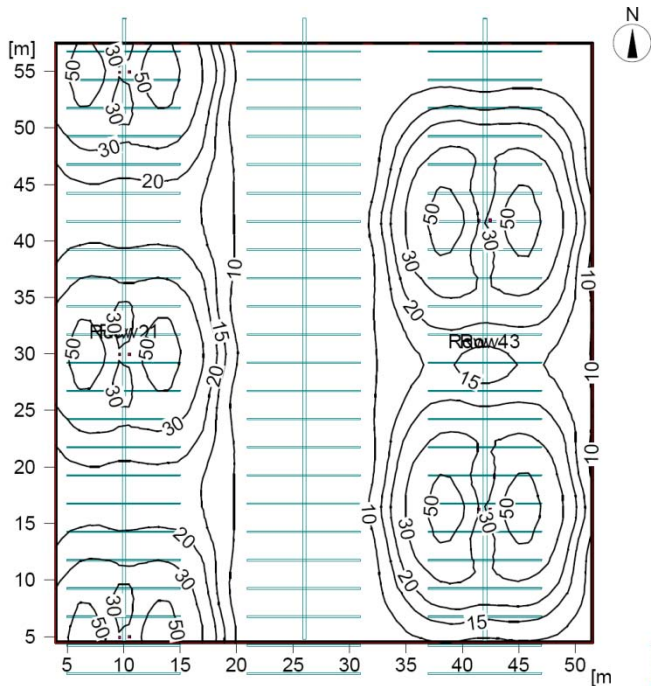
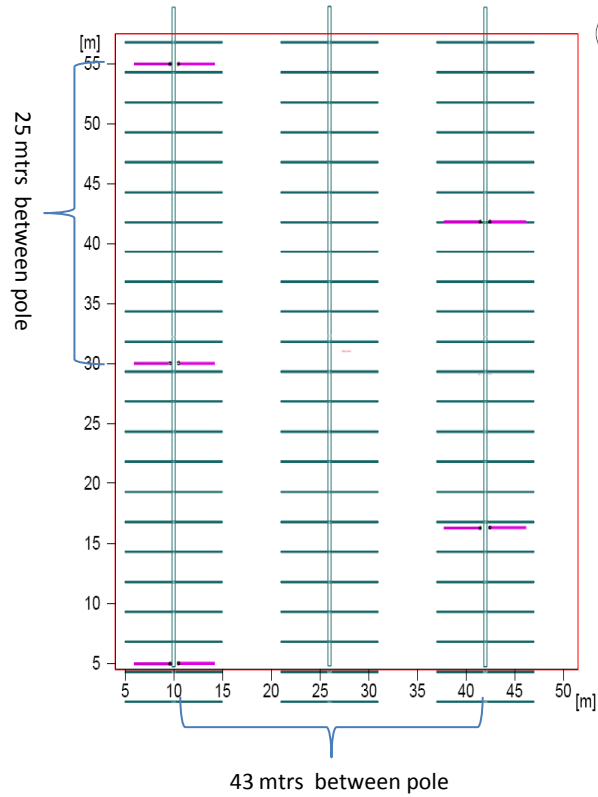
Average illuminance Eav 20.3 lx

Maximum illuminance Emax 62 lx

Lamp: LLG CrystalLed 48 6000K XPG 7423Lm 72W

2 lamps @ 8mtr pole.

Total power per area (2517.50 m²) 0.31 W/m² (1.51 W/m²/100lx)



LedlightGroup



www.ledlightgroup.com

CRYSTALLED® SERIES PARKING AREAS

Parking area suggestion 3

Illuminance

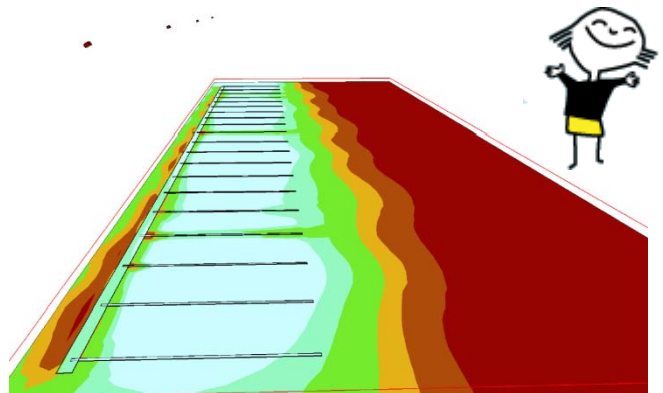
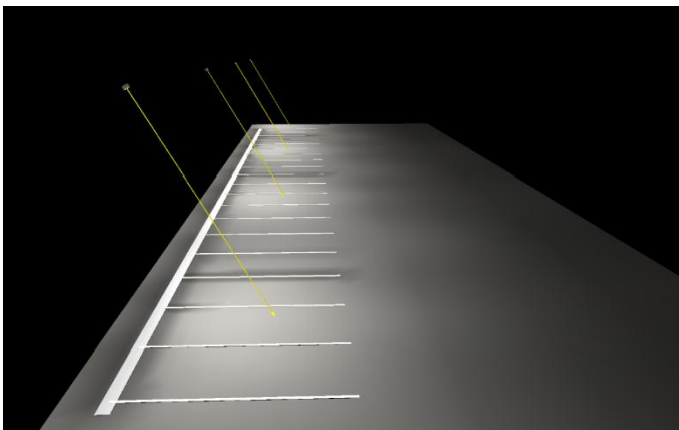
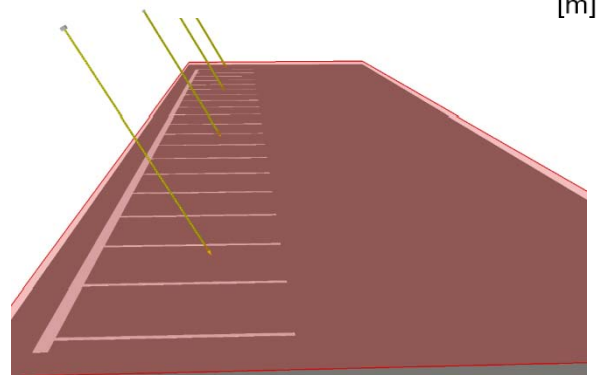
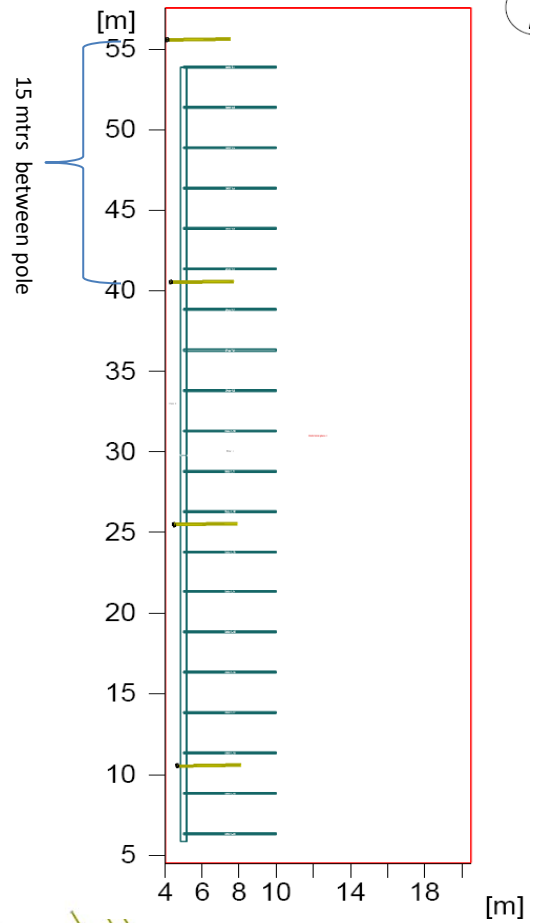
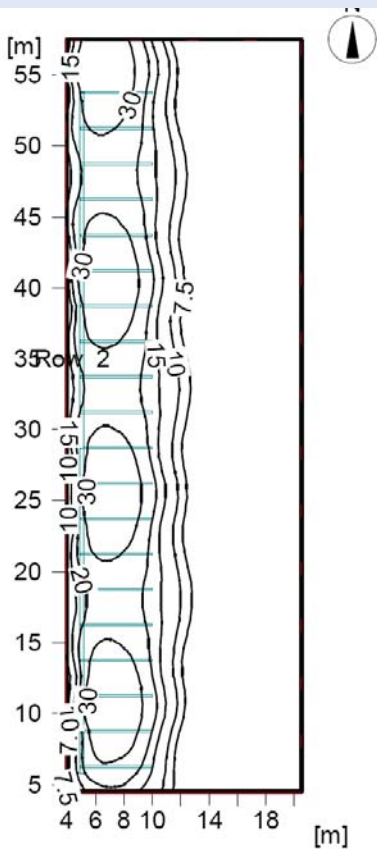
Average illuminance Eav 19 lx

Maximum illuminance Emax 52 lx

Lamp: LLG CrystalLed 24 6000K XPG 3711Lm 36W

1 lamps @ 6mtr pole.

Total power per area (874.50 m²) 0.18 W/m² (1.40 W/m²/100lx)



LedlightGroup



www.ledlightgroup.com

CRYSTALLED® SERIES PARKING AREAS

Parking area suggestion 4

Illuminance

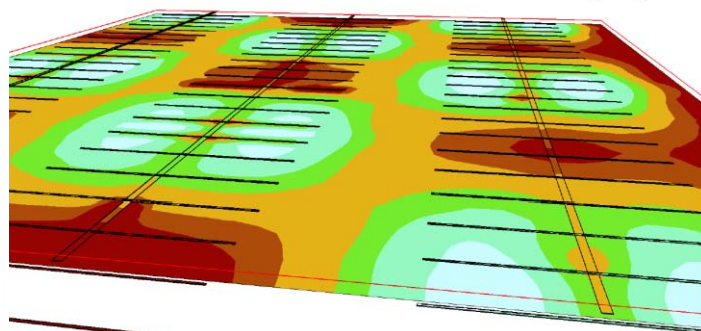
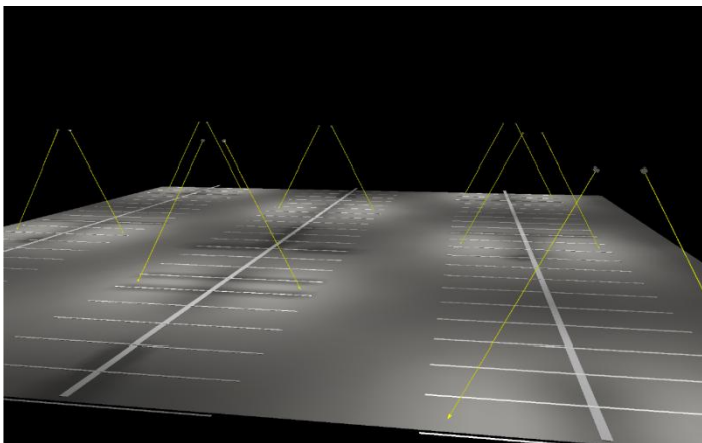
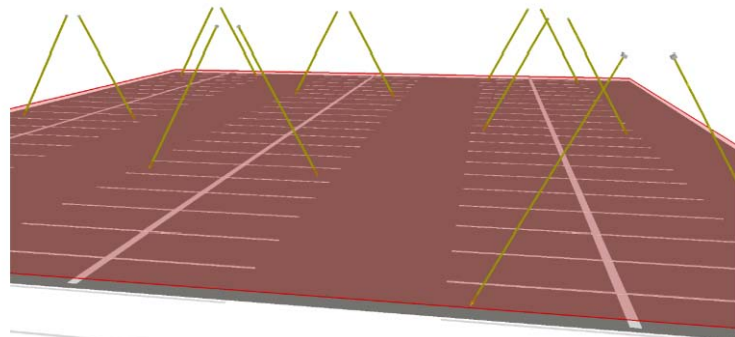
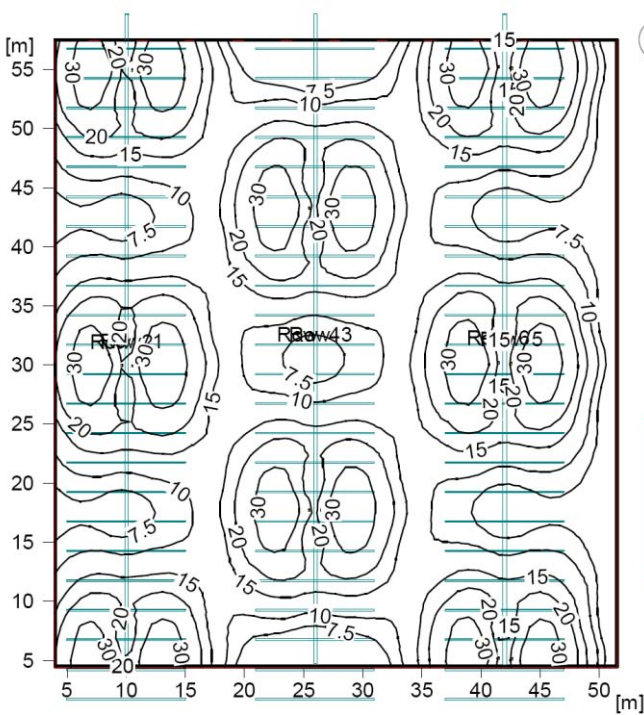
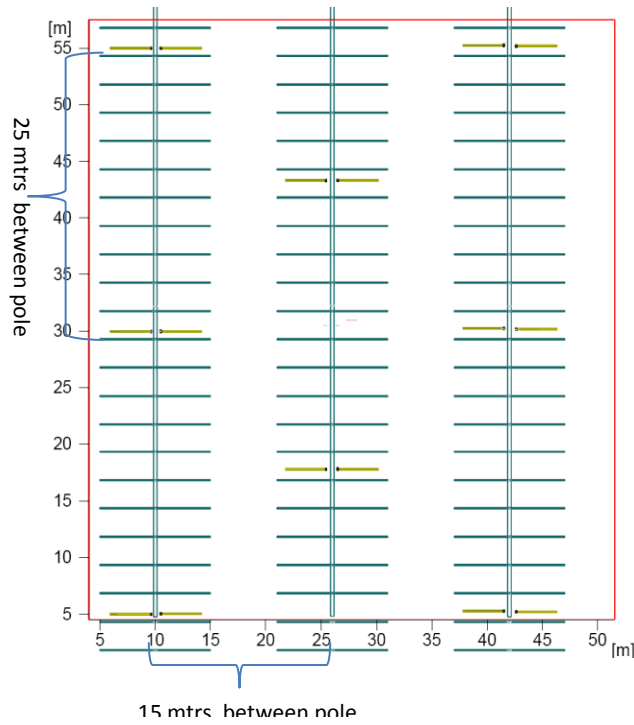
Average illuminance Eav 16.8 lx

Maximum illuminance Emax 42.1 lx

Lamp: LLG CrystalLed 24 XPG 6000K 3711Lm 36W

2 lamps @ 7mtr pole.

Total power per area (2517.50 m²) 0.25 W/m² (1.52 W/m²/100lx)



LedlightGroup



www.ledlightgroup.com

CRYSTALLED[®] SERIES PARKING AREAS

Parking area suggestion 5

Illuminance

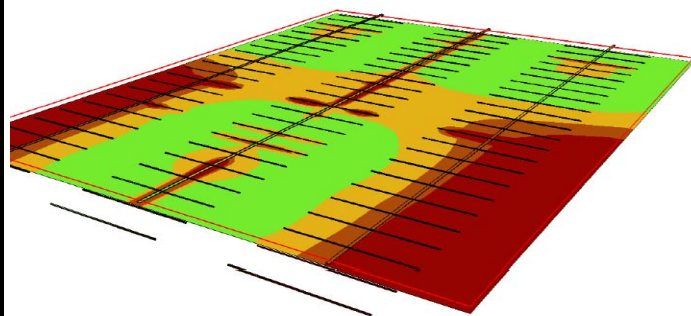
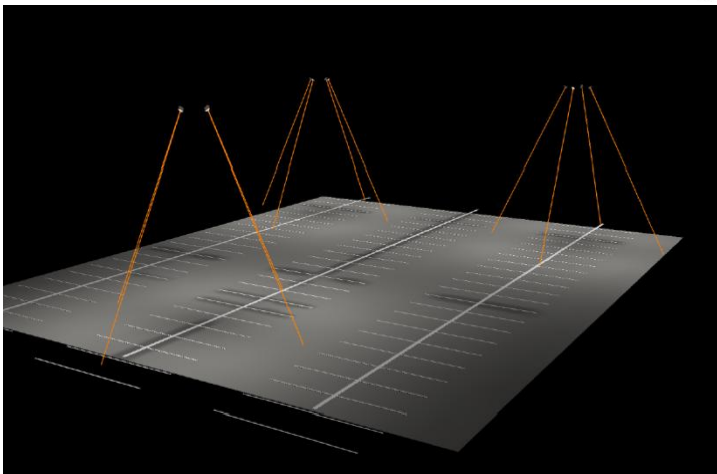
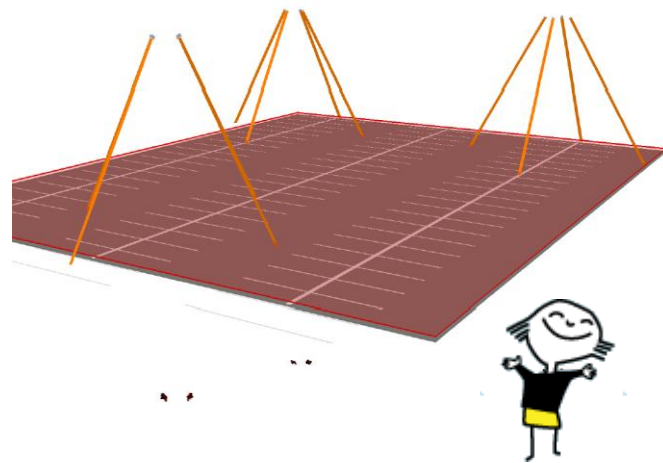
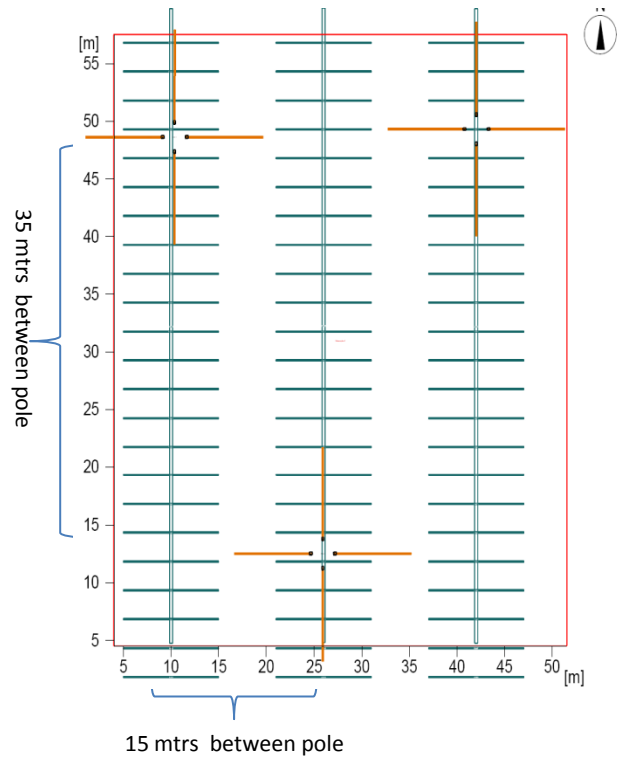
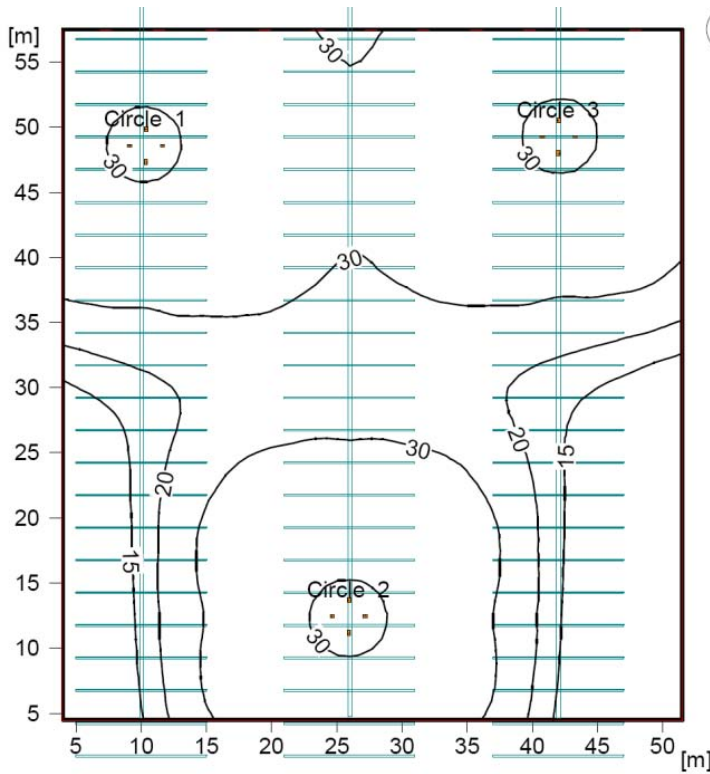
Average illuminance Eav 29 lx

Maximum illuminance Emax 47.6 lx **Lamp** LLG CrystallLed 72

6000K 11134Lm 107W

4 lamps @ 14mtr pole.

Total power per area (2517.50 m²) 0.52 W/m² (1.79 W/m²/100lx)



LedlightGroup



www.ledlightgroup.com